

16 May 2017

Mutsho

(A translation of weather in Tshivenda)

Weekly Weather Forecast

Weekly Outlook: 16 May - 24 May 2017

Rainfall

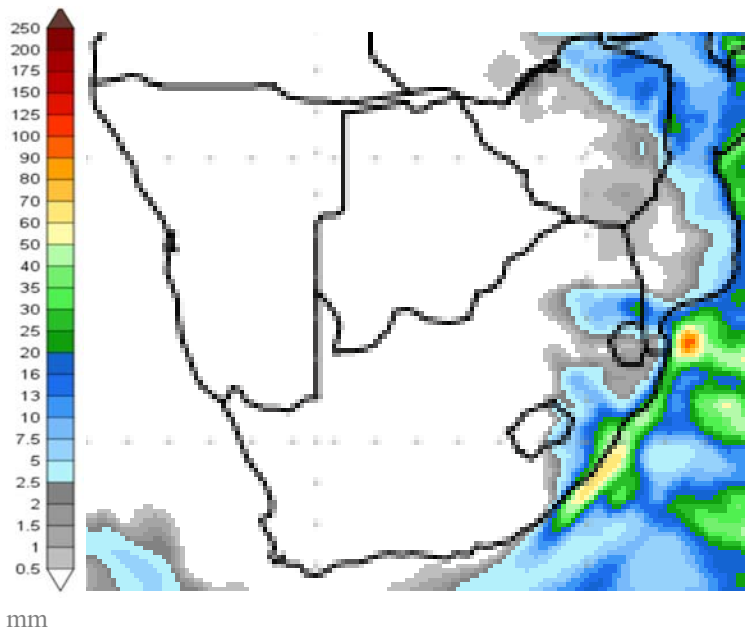


Figure 1: Precipitation for Tuesday 16 May to Wednesday 24 May 2017.

In terms of expected rainfall, a dry week is expected for South Africa, with only 10mm expected over eastern Mpumalanga and the southern parts of KZN as the only prospect.

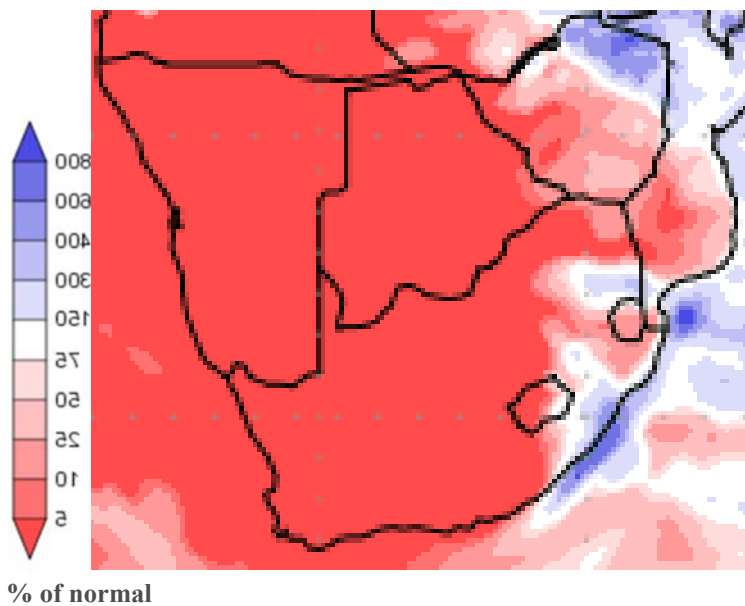


Figure 2: Precipitation (% of normal) for Tuesday 16 May to Wednesday 24 May 2017.

Normal to above-normal rainfall is expected over eastern Mpumalanga and southern KZN, while the rest of South Africa will remain dry with no rainfall expected.

Precipitation forecasts from the **National Centers for Environmental Prediction**.

Normal rainfall derived from CMAP monthly climatology for 1979 – 2003

Information from: <http://www.wxmaps.org/outlooks.php>

Credits:

1. The Center for Ocean-Land-Atmosphere Studies
2. George Mason University



Temperature

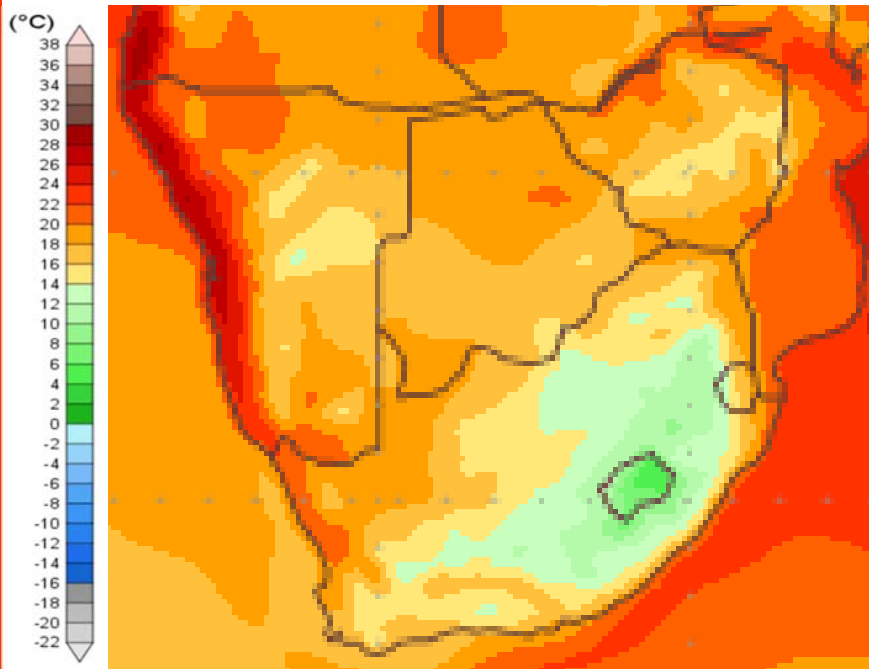


Figure 3: Mean surface temperature from Tuesday 16 May to Wednesday 24 May 2017.

As a result of the cold front and snowfall in the Eastern Cape and Drakensberg mountains, temperatures for this week will be colder as compared to last week. Temperatures between 14 to 18°C are expected for Limpopo, the Northern Cape and Western Cape, while the rest of the country will be cold with average temperatures not exceeding 14°C

Note:

Temperatures reflect daily average temperatures over an 8 day period.

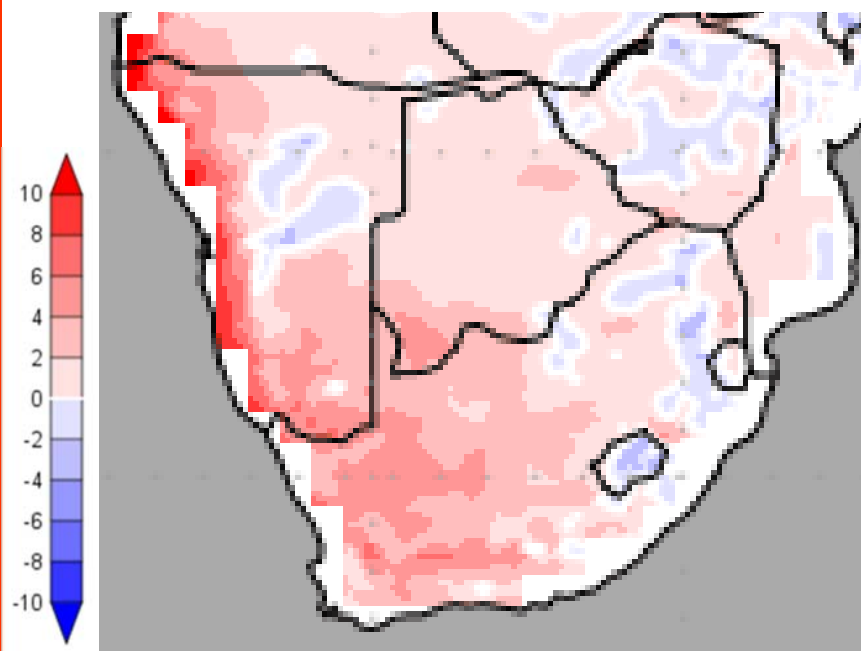


Figure 4: Temperature anomaly for Tuesday 16 May to Wednesday 24 May 2017.

Despite the snowfall over the weekend, temperatures for most of South Africa remain above normal for this time of year. Temperatures along the coastal regions will be normal while isolated areas in northern KZN, central Mpumalanga and parts of Limpopo will be colder than normal as indicated by the blue colours.

Temperature forecasts from the **National Centers for Environmental Prediction**.

Normal Temperature derived from CRU monthly climatology for 1901 – 2000

Information from: <http://www.wxmaps.org/outlooks.php>

Credits:

1. The Center for Ocean-Land-Atmosphere Studies
2. George Mason University

Official Disclaimer: COLA makes no guarantees about and bears no responsibility or liability concerning the accuracy or timeliness of the images being published on these web pages. All images are generated by COLA and do not represent the actual forecasts issued by the National Weather Service. These products are not a substitute for official forecasts and are not guaranteed to be complete or timely. The underlying data are the direct product of the various operational forecast models run by the [National Centers for Environmental Prediction](#), [National Weather Service](#), [NOAA](#) and are presented without correction.

Monthly Climate Watch reports: <http://www.manstratais.co.za/climatewatch.aspx>

Manstrat Website: <http://www.manstratais.co.za/>

Twitter: <https://twitter.com/ManstratAIS> or follow @ManstratAIS

Facebook: <https://www.facebook.com/manstratais/>

