

02 May 2017

Mutsho

(A translation of weather in Tshivenda)

Weekly Weather Forecast



Weekly Outlook: 2 May - 10 May 2017

Temperature

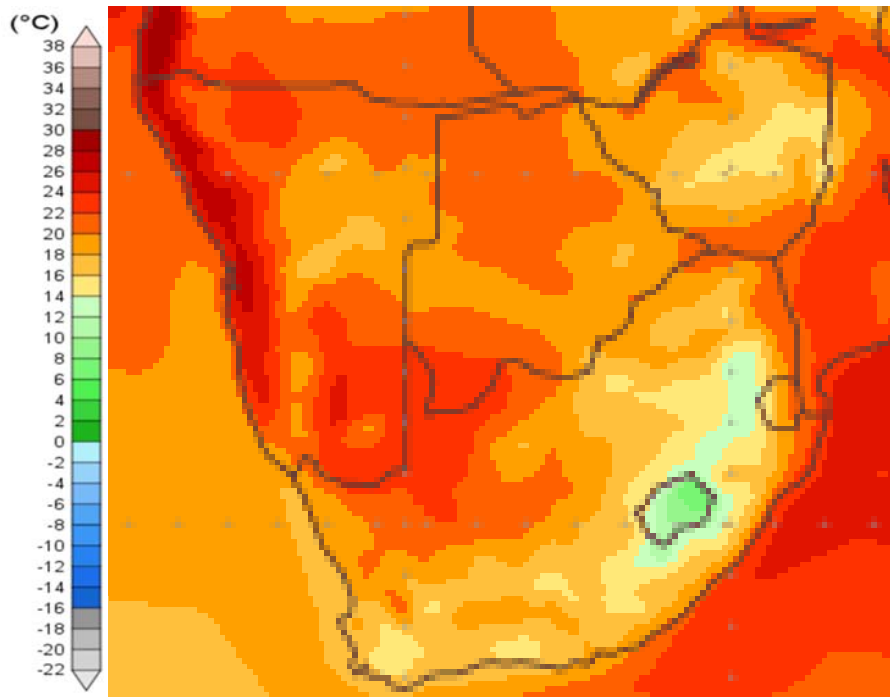


Figure 1: Mean surface temperature from Tuesday 2 May to Wednesday 10 May 2017.

The temperature across large areas of South Africa is dropping as a result of dry air dominating over the interior. At the same time warmer temperatures — 20 to 24°C — are expected over the northern parts of the Northern Cape. For the rest of the country cooler temperatures — below 20°C — are expected for the rest of South Africa.

Note:

Temperatures reflect daily average temperatures over an 8 day period.

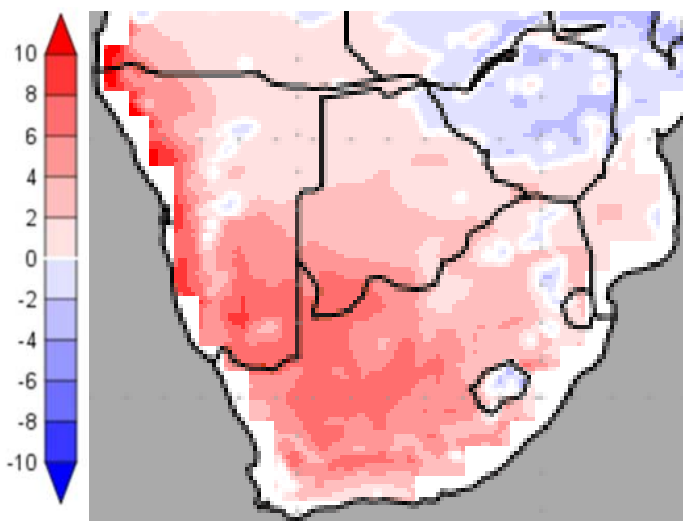


Figure 2: Temperature anomaly for Tuesday 2 May to Wednesday 10 May 2017.

Warmer than normal temperatures are expected over most of South Africa except for the coastal regions where normal temperatures are expected for this time of year.

Temperature forecasts from the **National Centers for Environmental Prediction**.

Normal Temperature derived from CRU monthly climatology for 1901 – 2000

Information from: <http://www.wxmaps.org/outlooks.php>

Credits:

1. The Center for Ocean-Land-Atmosphere Studies
2. George Mason University



Rainfall

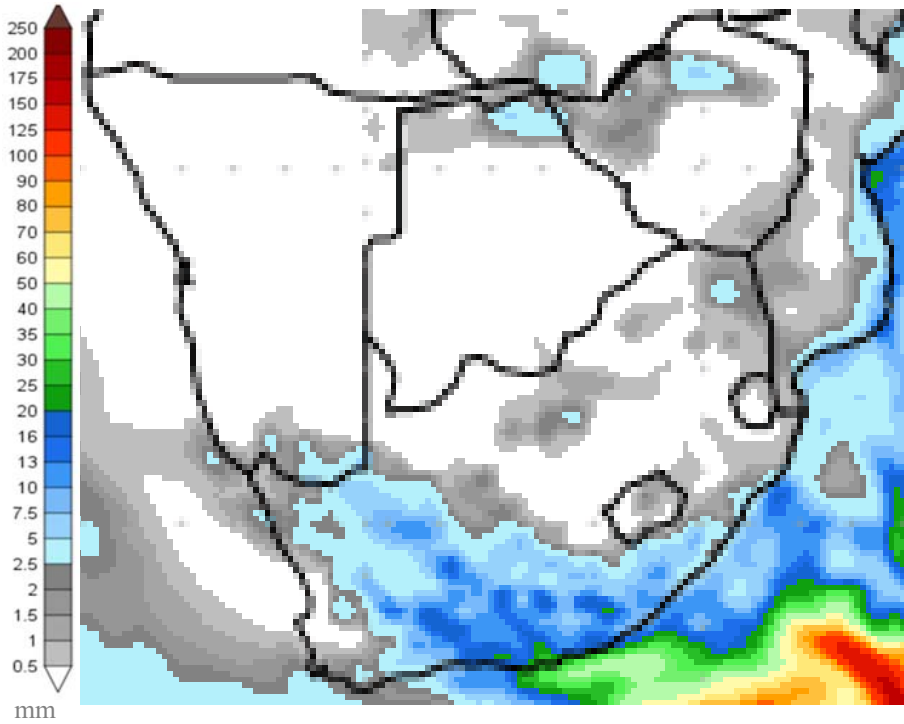


Figure 3: Precipitation for Tuesday 2 May to Wednesday 10 May 2017.

Rainfall is expected over the southern Northern Cape, as well as the Western and Eastern Cape Provinces. Rainfall in these areas will be up to 5mm although some areas might receive up to 20mm.

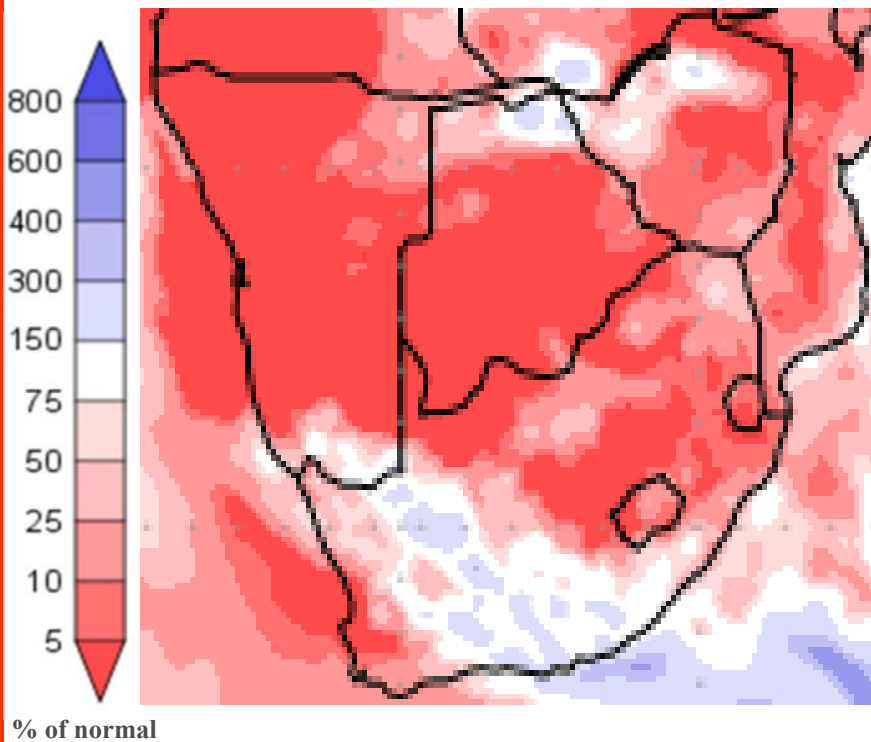


Figure 4: Precipitation (% of normal) for Tuesday 2 May to Wednesday 10 May 2017.

Rainfall expected over large parts of the Northern, Western and Eastern Cape provinces will be normal to above normal for this time of year. The rest of South Africa will remain dry with little to no rain expected.

Precipitation forecasts from the **National Centers for Environmental Prediction**.

Normal rainfall derived from CMAP monthly climatology for 1979 – 2003

Information from: <http://www.wxmaps.org/outlooks.php>

Credits:

1. The Center for Ocean-Land-Atmosphere Studies
2. George Mason University

Official Disclaimer: COLA makes no guarantees about and bears no responsibility or liability concerning the accuracy or timeliness of the images being published on these web pages. All images are generated by COLA and do not represent the actual forecasts issued by the National Weather Service. These products are not a substitute for official forecasts and are not guaranteed to be complete or timely. The underlying data are the direct product of the various operational forecast models run by the [National Centers for Environmental Prediction](#), [National Weather Service](#), [NOAA](#) and are presented without correction.

Monthly Climate Watch reports: <http://www.manstratais.co.za/climatewatch.aspx>

Manstrat Website: <http://www.manstratais.co.za/>

Twitter: <https://twitter.com/ManstratAIS> or follow @ManstratAIS

Facebook: <https://www.facebook.com/manstratais/>

