

25 April 2017

Mutsho

(A translation of weather in Tshivenda)

Weekly Weather Forecast

Weekly Outlook: 25 April - 3 May 2017

Temperature

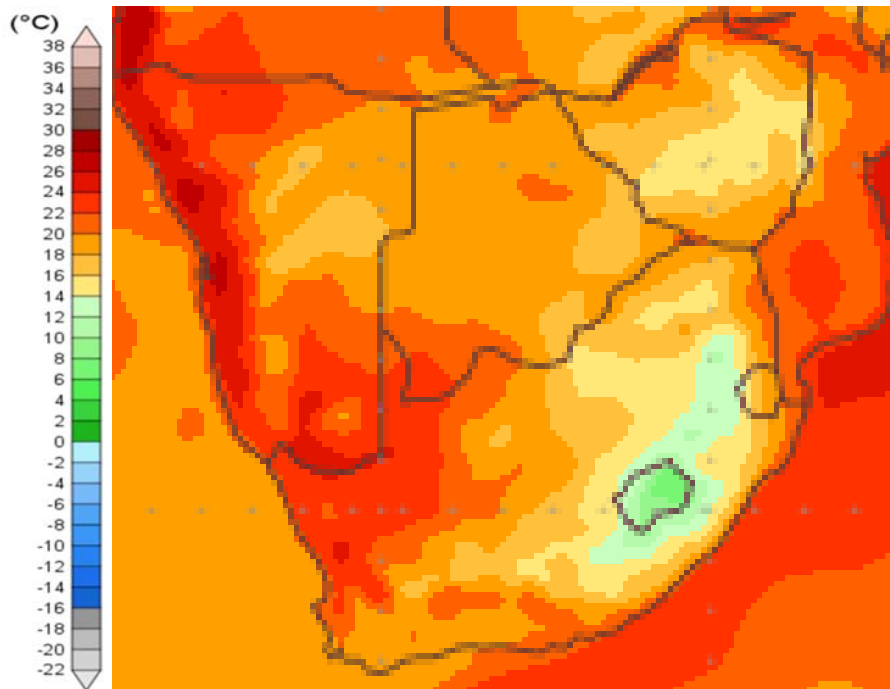


Figure 1: Mean surface temperature from Tuesday 25 April to Wednesday 3 May 2017.

The northern parts of the Northern Cape and the west coast will experience temperatures of between 20 to 24°C, the rest of South Africa will experience average temperatures below 20°. The eastern regions of Mpumalanga, Free State and the Eastern Cape will likely experience temperatures of between 8 to 14°C.

Note:

Temperatures reflect daily average temperatures over an 8 day period.

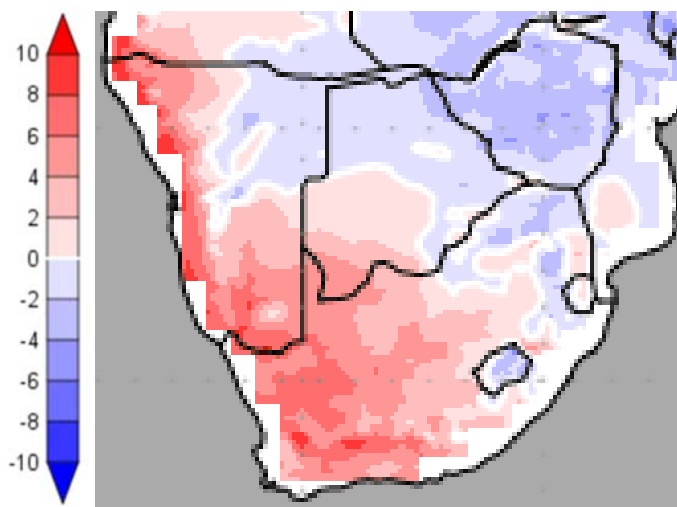


Figure 2: Temperature anomaly for Tuesday 25 April to Wednesday 3 May 2017.

Colder than normal temperatures are expected over Limpopo, Mpumalanga, & parts of KZN. Normal temperatures are expected along the coastal regions while the western half of South Africa will experience warmer than normal temperatures for this time of year.

Temperature forecasts from the **National Centers for Environmental Prediction**.

Normal Temperature derived from CRU monthly climatology for 1901 – 2000

Information from: <http://www.wxmaps.org/outlooks.php>

Credits:

1. The Center for Ocean-Land-Atmosphere Studies
2. George Mason University



Rainfall

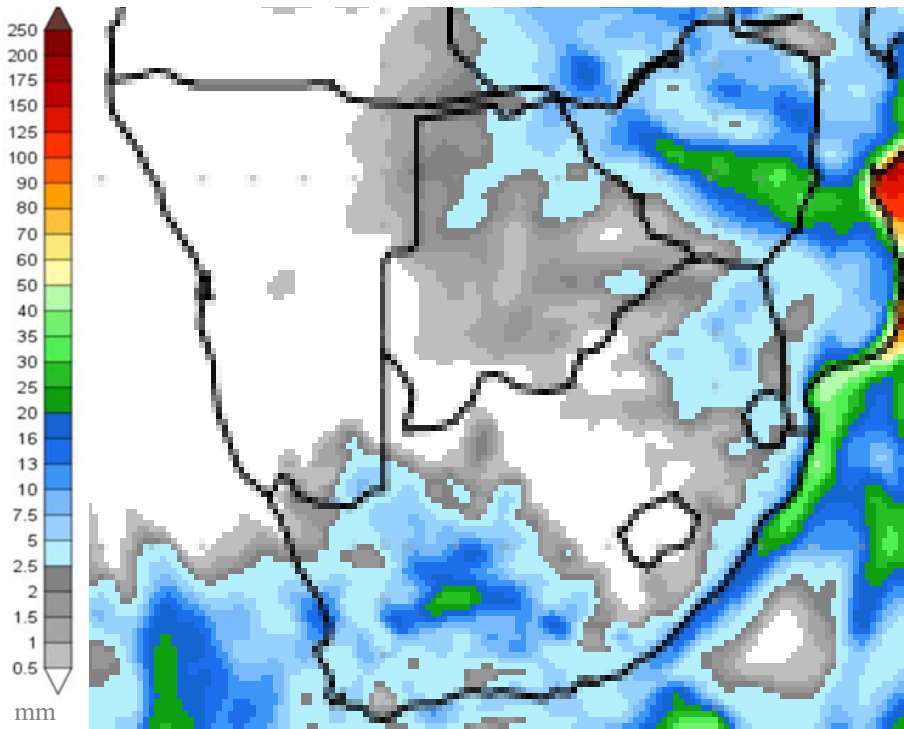


Figure 3: Precipitation for Tuesday 25 April to Wednesday 3 May 2017.

Up to 5mm of rain is expected over the Cape provinces, with isolated areas over the Karoo region that might receive up to 30mm. The coastal regions of the Eastern Cape and KZN will receive 5mm this week as well as the north eastern Limpopo and large parts of Mpumalanga.

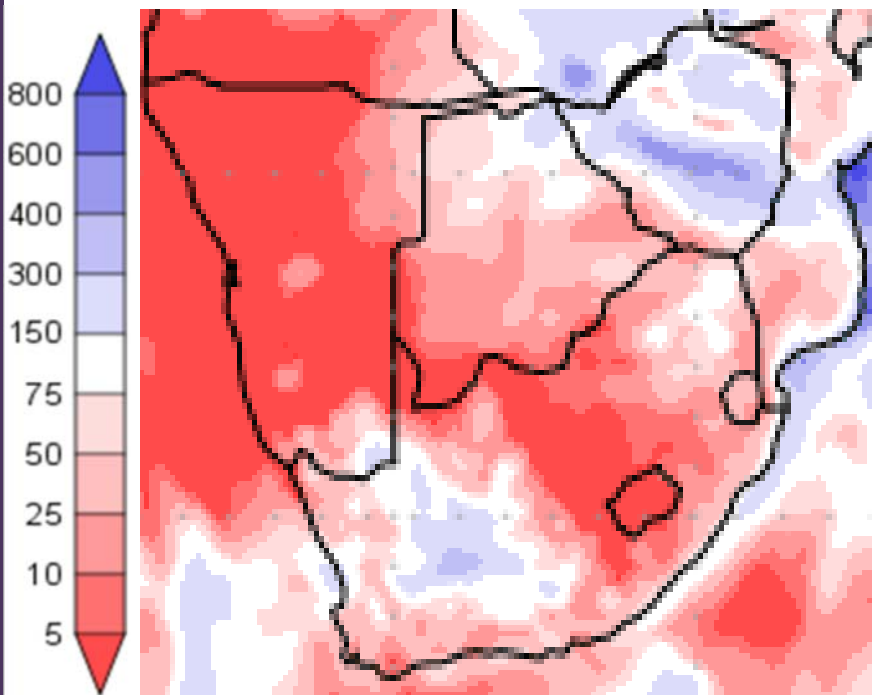


Figure 4: Precipitation (% of normal) for Tuesday 25 April to Wednesday 3 May 2017.

Above normal rainfall is expected over the central Cape (Karoo) region. Rainfall for the rest of South Africa will be below-normal. Isolated areas in eastern Limpopo will receive normal rainfall for this time of year.

% of normal

Precipitation forecasts from the **National Centers for Environmental Prediction**.

Normal rainfall derived from CMAP monthly climatology for 1979 – 2003

Information from: <http://www.wxmaps.org/outlooks.php>

Credits:

1. The Center for Ocean-Land-Atmosphere Studies
2. George Mason University

Official Disclaimer: COLA makes no guarantees about and bears no responsibility or liability concerning the accuracy or timeliness of the images being published on these web pages. All images are generated by COLA and do not represent the actual forecasts issued by the National Weather Service. These products are not a substitute for official forecasts and are not guaranteed to be complete or timely. The underlying data are the direct product of the various operational forecast models run by the [National Centers for Environmental Prediction](#), [National Weather Service](#), [NOAA](#) and are presented without correction.

Monthly Climate Watch reports: <http://www.manstratais.co.za/climatewatch.aspx>

Manstrat Website: <http://www.manstratais.co.za/>

Twitter: <https://twitter.com/ManstratAIS> or follow @ManstratAIS

Facebook: <https://www.facebook.com/manstratais/>

