

11 October 2016

Mutsho

(A translation of weather in Tshivenda)

Weekly Weather Forecast



Weekly Outlook - 11 October 2016

Temperature

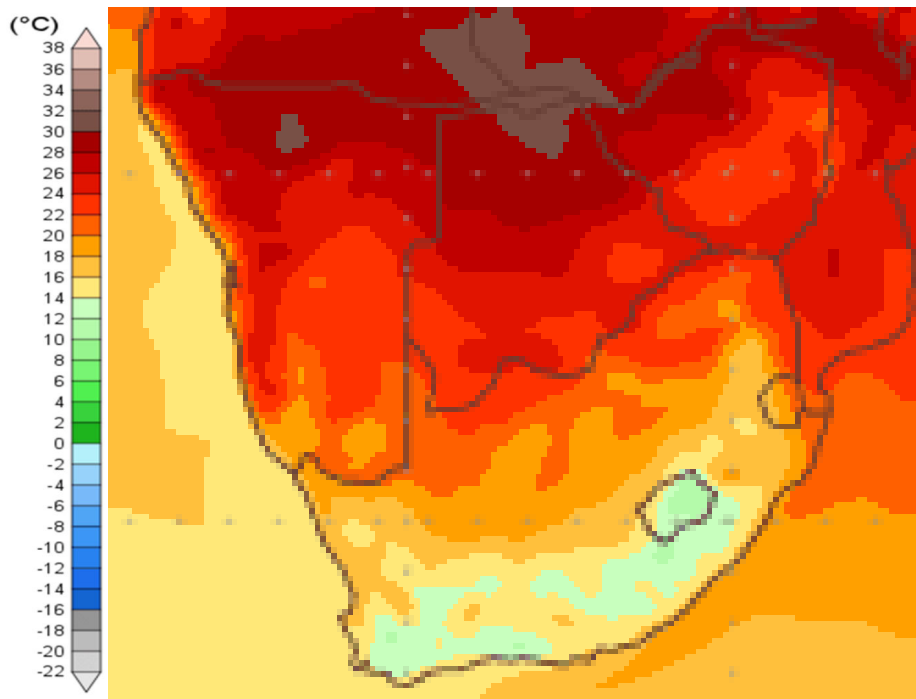


Figure 1: Mean surface temperature from Tuesday 11 October 2016 to Wednesday 19 October 2016

Mean temperatures for the northern regions of South Africa, Limpopo, North West and northern Northern Cape will be between 20 to 24 °C. The rest of South Africa will experience mean temperatures between 14 to 20 °C.

Parts of the Western and Eastern Cape can expect temperatures between 10 to 14°C.

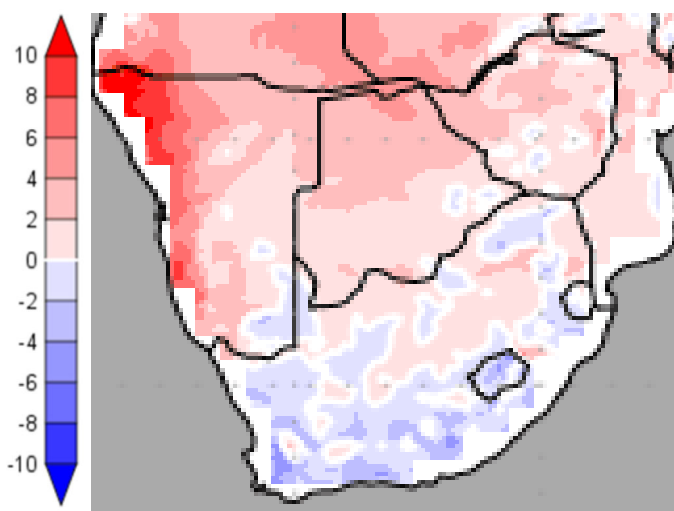


Figure 2: Temperature anomaly for Tuesday 11 October 2016 to Wednesday 19 October 2016

Most parts of South Africa will experience cooler temperatures than normal. Isolated areas in the Northern Cape. Limpopo and Gauteng will experience higher than normal temperatures.

Temperature forecasts from the **National Centers for Environmental Prediction**. Normal Temperature derived from CRU monthly climatology for 1901 – 2000
Information from: <http://www.wxmaps.org/outlooks.php>

Credits:

1. The Center for Ocean-Land-Atmosphere Studies
2. George Mason University



Rainfall

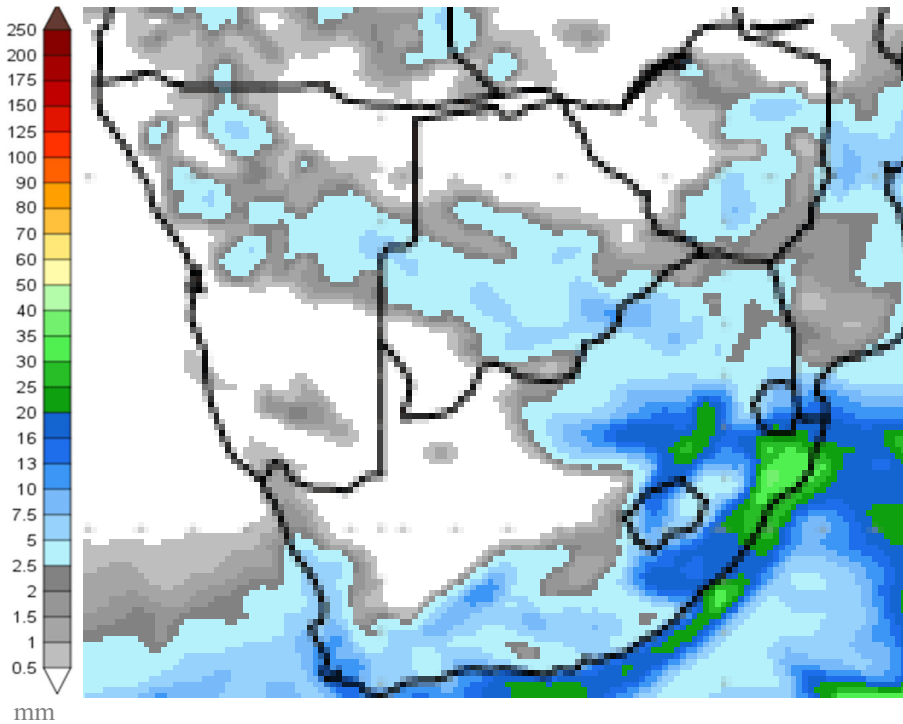


Figure 3: Precipitation for Tuesday 11 October 2016 to Wednesday 19 October 2016

Rainfall is expected over most of the country except the Northern Cape and Southern Free State. Between 2 to 10 mm is expected for most areas except for northern KwaZulu-Natal where up to 30 mm is predicted.

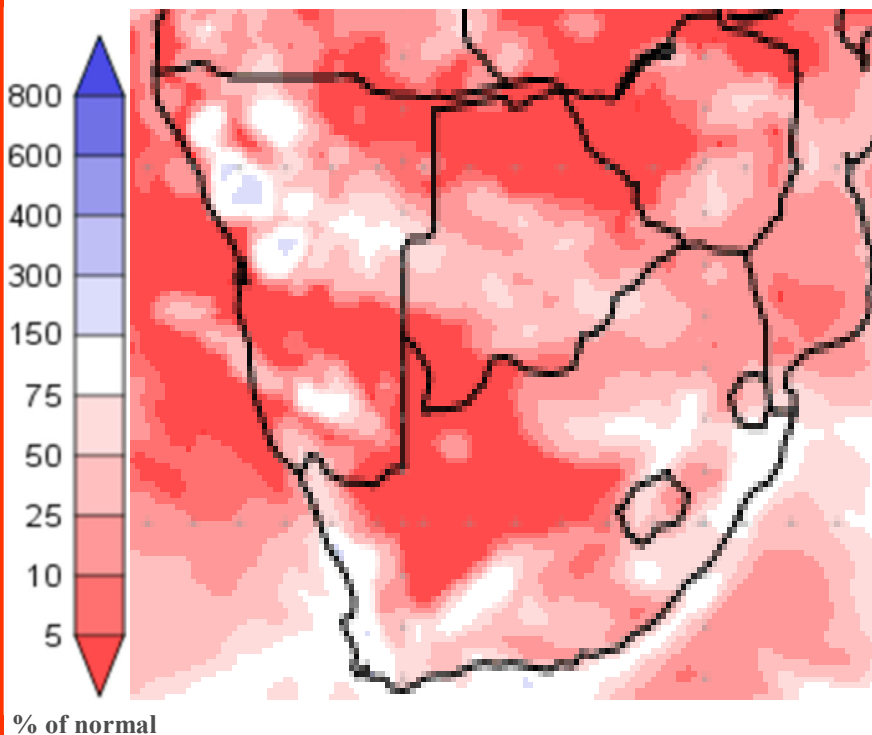


Figure 4: Precipitation (% of normal) for Tuesday 11 October 2016 to Wednesday 19 October 2016

The Northern Cape and Southern Free State will remain dry while the rest of the country will receive below normal rainfall. Normal rainfall is expected along the west coast, parts of the Eastern Cape, the eastern Free State and northern KwaZulu-Natal.

Precipitation forecasts from the **National Centers for Environmental Prediction**.

Normal rainfall derived from CMAP monthly climatology for 1979 – 2003

Information from: <http://www.wxmaps.org/outlooks.php>

Credits:

1. The Center for Ocean-Land-Atmosphere Studies
2. George Mason University

Official Disclaimer: COLA makes no guarantees about and bears no responsibility or liability concerning the accuracy or timeliness of the images being published on these web pages. All images are generated by COLA and do not represent the actual forecasts issued by the National Weather Service. These products are not a substitute for official forecasts and are not guaranteed to be complete or timely. The underlying data are the direct product of the various operational forecast models run by the [National Centers for Environmental Prediction](#), [National Weather Service](#), [NOAA](#) and are presented without correction.

Monthly Climate Watch reports: <http://www.manstratais.co.za/climatewatch.aspx>

Manstrat Website: <http://www.manstratais.co.za/>

Twitter: <https://twitter.com/ManstratAIS> or follow @ManstratAIS

Facebook: <https://www.facebook.com/manstratais/>

