

13 September 2016

Mutsho

(A translation of weather in Tshivenda)

Weekly Weather Forecast



Weekly Outlook - 13 September 2016

Temperature

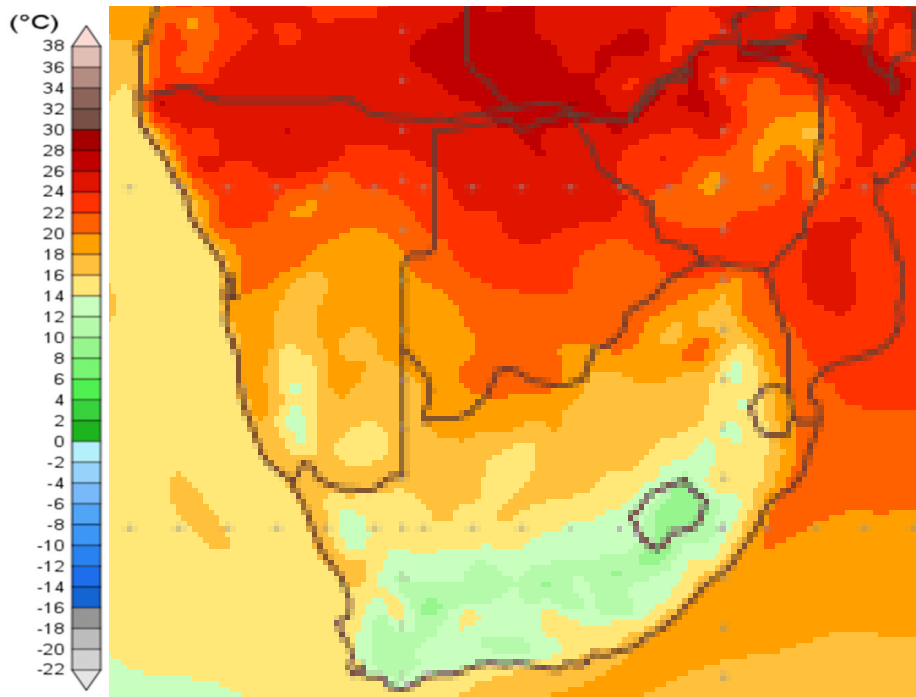


Figure 1: Mean surface temperature from Tuesday 13 September 2016 to Wednesday 21 September 2016

Mean temperatures for most parts of South Africa are expected to be between 14°C and 22°C for the period 13 September to 21 September 2016.

For the Western Cape and Eastern Cape, temperatures are expected to be between 10°C to 14°C during this period.

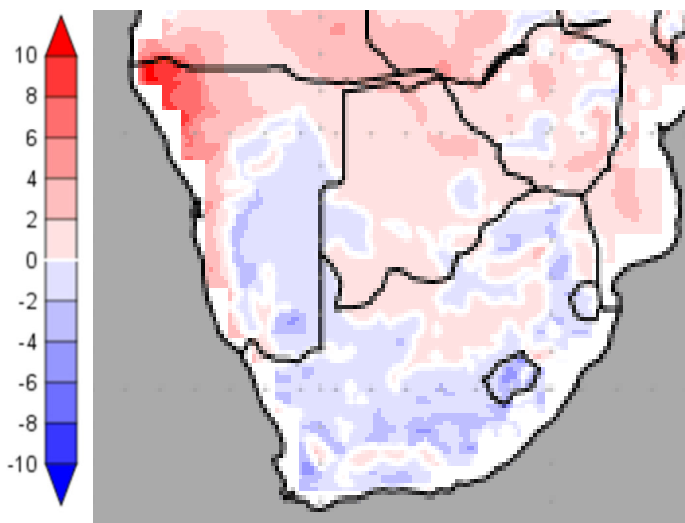


Figure 2: Temperature anomaly for Tuesday 13 September 2016 to Wednesday 21 September 2016

Due to a strong cut-off low, bringing moisture into South Africa, most parts of the country can expect to be between 2 to 4 °C cooler than normal. Some isolated areas can experience temperatures of 2°C warmer than normal.

Temperature forecasts from the **National Centers for Environmental Prediction**.
Normal Temperature derived from CRU monthly climatology for 1901 – 2000
Information from: <http://www.wxmaps.org/outlooks.php>

Credits:

1. The Center for Ocean-Land-Atmosphere Studies
2. George Mason University



Rainfall

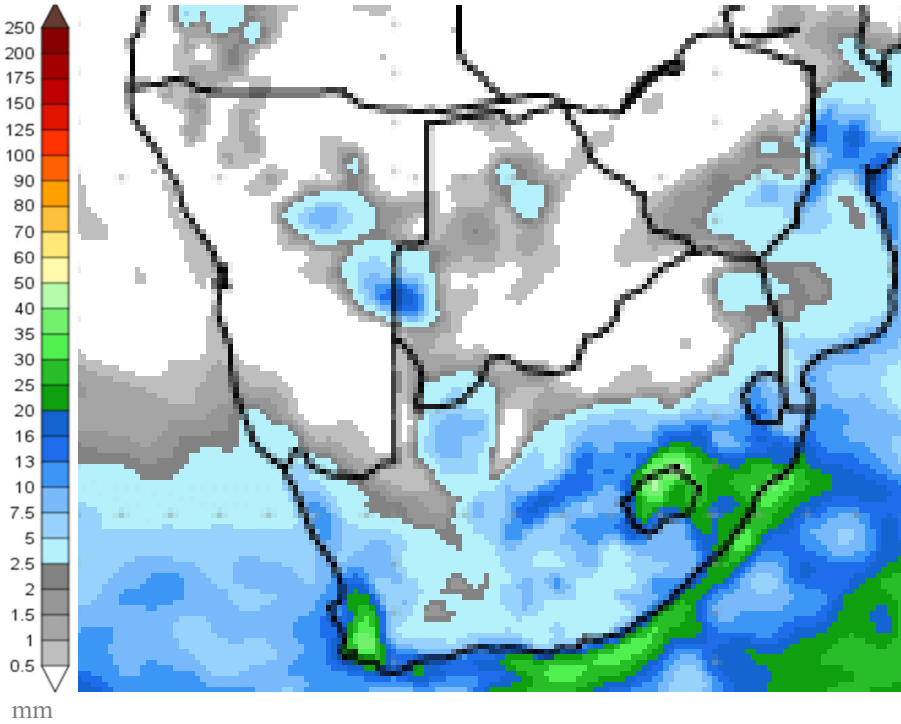


Figure 3: Precipitation for Tuesday 13 September 2016 to Wednesday 21 September 2016

Rainfall is expected over most areas of the country except for the eastern Limpopo, Gauteng and North West.

Rainfall up to 30 mm is expected in the Western Cape and large parts of KwaZulu-Natal.

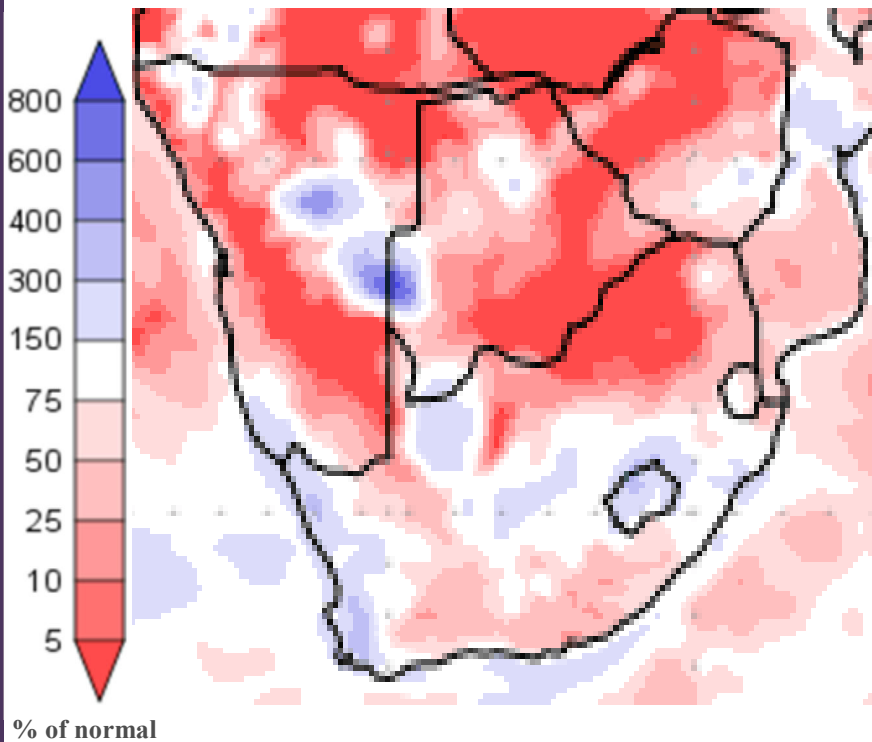


Figure 4: Precipitation (% of normal) for Tuesday 13 September 2016 to Wednesday 21 September 2016

Higher than normal rainfall is expected along the west coast of South Africa, the northern areas of the Northern Cape as well as the southern Free State. Rainfall will be below normal for other parts of the country with no rain expected for eastern Limpopo, Gauteng and North West.

Precipitation forecasts from the **National Centers for Environmental Prediction.**

Normal rainfall derived from CMAP monthly climatology for 1979 – 2003

Information from: <http://www.wxmaps.org/outlooks.php>

Credits:

1. The Center for Ocean-Land-Atmosphere Studies
2. George Mason University

Official Disclaimer: COLA makes no guarantees about and bears no responsibility or liability concerning the accuracy or timeliness of the images being published on these web pages. All images are generated by COLA and do not represent the actual forecasts issued by the National Weather Service. These products are not a substitute for official forecasts and are not guaranteed to be complete or timely. The underlying data are the direct product of the various operational forecast models run by the [National Centers for Environmental Prediction](#), [National Weather Service](#), [NOAA](#) and are presented without correction.

Monthly Climate Watch reports: <http://www.manstratais.co.za/climatewatch.aspx>

Manstrat Website: <http://www.manstratais.co.za/>

Twitter: <https://twitter.com/ManstratAIS> or follow @ManstratAIS

Facebook: <https://www.facebook.com/manstratais/>

